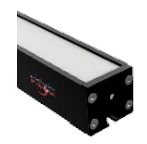


Mounting : Method A
Use M4 bolts for Side Mounting



Mounting : Method B
i) Remove Plug.
ii) Insert M5 Nuts in slide.
iii) Reverse mount using M5 Bolts



Clear Lens
P-Filter
Diffuser

Leds

Input Voltage : + 24Vdc
Input Current : 2A , 1.5A
SMPS : 24V , 3A Min
Strobe : 5V ~24V Standard, 1V ~5V Opt
Colors : White, Red, Blue, Green, IR, UV

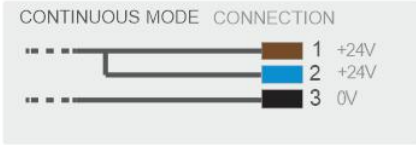
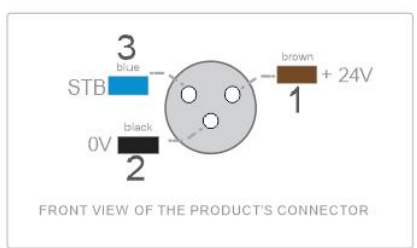
Diffuser : Medium (Std), Low, High
P-Filter : Option Available
 Additional diffusers, filters may be used by top mounting.
Reccomended SMPS : 24V DC , 5Amp

For Continuous operation please use low current option or contact us.



■ Connection Details

M8/M12 Connector/ Cable Breakout



1000 mA MAX
 This product has to be plugged to a DC Power Supply capable of supplying atleast 1Amp Peak.

Nomenclature :

- x = W White
- R Red (670nm)
- B Blue
- G Green
- UV
- IR Infra Red (850nm)
- yy = DP Diffuser Polariser
- D Diffuser
- zz - 2A 2Amps
- 1A5 1.5Amps
- 1A 1Amp
- 0A7 0.75Amps

Document Type : Product	Title : Comet-110-xx-yy-zz		
	Drawing Number : Prod, Comet-110-xx-yy-zz		
	Rev. No. :	Date of Issue :	Sheet :
	2.0	07-05-2021	1/1