

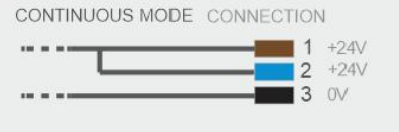
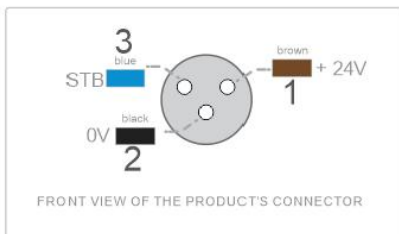
**Input Voltage :** + 24Vdc  
**Input Current :** 3A , 1.5A  
**SMPS :** 24V , 3A Min  
**Stroke :** 5V ~24V Standard, 1V ~5V Opt  
**Colors :** White, Red, Blue, Green, IR, UV

**Diffuser :** Medium (Std), Low, High  
**P-Filter :** Option Available  
 Additional diffusers, filters may be used by top mounting.  
**Reccomended SMPS :** 24V DC , 5Amp

**For Continuous operation please use low current option or contact us.**

**Connection Details**

**M8/M12 Connector/ Cable Breakout**

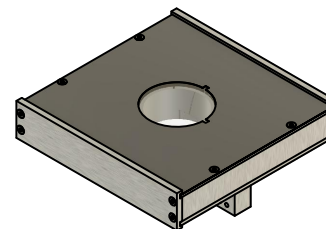


**⚠ 1000 mA MAX**

This product has to be plugged to a DC Power Supply capable of supplying atleast 1Amp Peak.

**A (1:2)**

**Nomenclature :**  
 x = W White  
       R Red (670nm)  
       B Blue  
       G Green  
       UV  
       IR Infra Red (850nm)  
 yy = DP Diffuser Polariser  
       D Diffuser



Document Type : <b>Product</b>	Title : <b>Ceres-BIS-150-x-yy</b>		
	Drawing Number : <b>Prod, Ceres-BIS-x-yy</b>		
	Rev. No. : <b>1.0</b>	Date of Issue : <b>08-05-2021</b>	Sheet : <b>1/1</b>